



INDOFINE Chemical Company, Inc.

121 Stryker Lane, Bldg. 30, Suite 1 • Hillsborough, NJ 08844 • U.S.A.

Phone: (908) 359-6778 • FAX: (908) 359-1179

website: www.indofinechemical.com

e-mail: chemical@indofinechemical.com

CERTIFICATE OF ANALYSIS

Catalog number: 021055S

Product name: **HOMOORIENTIN with HPLC**
(Isoorientin, Luteolin-6-C-glucoside)

CAS Number: [4261-42-1]

Lot Number: 1504593

Chemical Formula: $C_{21}H_{20}O_{11}$

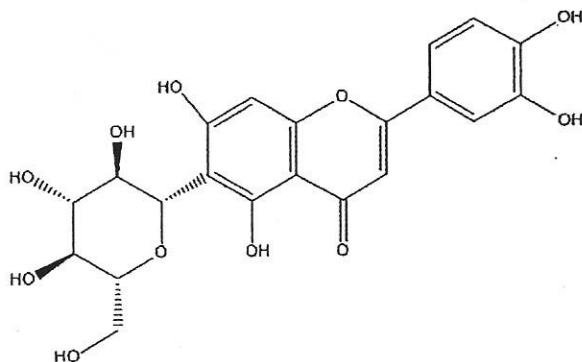
Molecular Weight: 448.38

Appearance: Yellowish powder

Loss on drying: 0.8%

Storage: Store in cool, dry place. Protect from light.
Keep package airproofed when not in use.

Purity(HPLC): 99.58%





INDOFINE Chemical Company, Inc.

121 Stryker Lane, Bldg. 30, Suite 1 • Hillsborough, NJ 08844 • U.S.A.

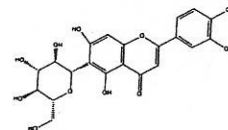
Phone: (908) 359-6778 • FAX: (908) 359-1179

website: www.indofinechemical.com

e-mail: chemical@indofinechemical.com

HPLC ANALYSIS

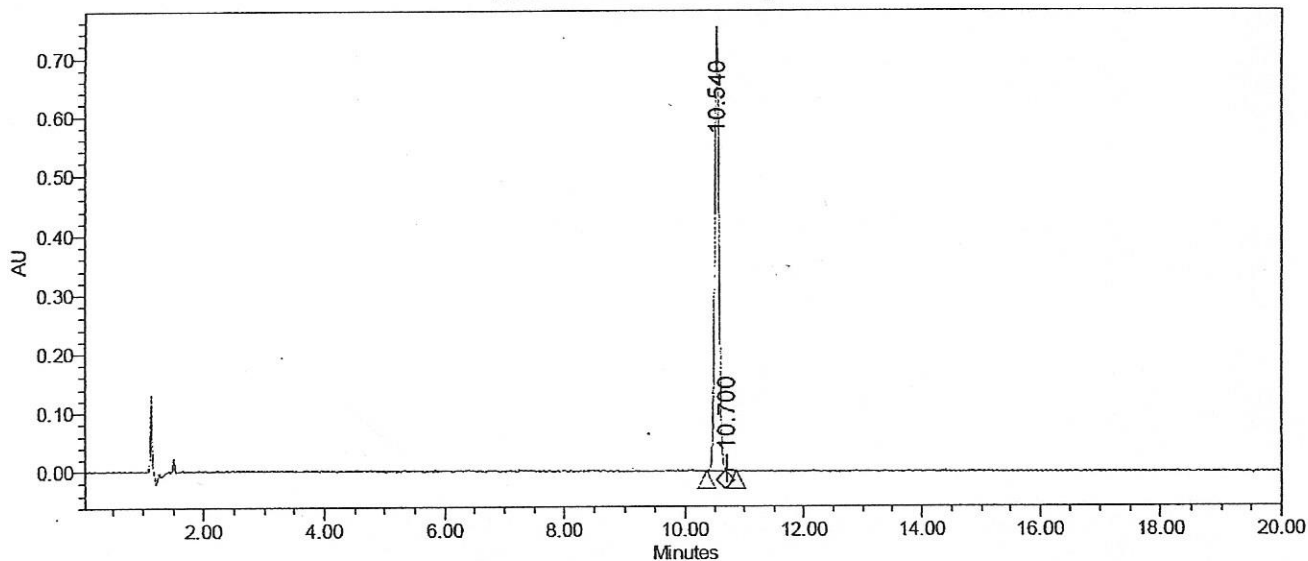
Catalog No.: 021055S
Product Name: Homoorientin
Lot No.: 1504593



SAMPLE INFORMATION

Sample Name:	Isoorientin	Acquired By:	System
Sample Type:	Unknown	Sample Set Name:	
Vial:	1:A,8	Acq. Method Set:	Isoorientin
Injection #:	1	Processing Method:	Samples
Injection Volume:	10.00 ul	Channel Name:	350.0nm
Run Time:	20.0 Minutes	Proc. Chnl. Descr.:	PDA 350.0 nm

Auto-Scaled Chromatogram



Peak Results

	Name	RT	Area	% Area	USP Plate Count	USP Resolution
1		10.540	3768076	99.58	103183.21	
2		10.700	16007	0.42		1.22